



TRI MO TRIMOTERM

TRIMOTERM TECHNICAL SPECIFICATION

TRIMOTERM	BRAND, PRODUCT FAMILY, PRODUCT TYPE	RENDER	JOINT	MAX. ACHIAVABLE FIRE RESISTANCE [EN 14509]*										U THERMAL TRANSMITTANCE (W/M²K) [EN 14509]*										AIRBORNE SOUND INSULATION R _w [C;Ctr] [dB] EN 14509										WATER PERMEABILITY [EN 14509]										WEIGHT [Fe 0,55/0,5] [kg/m²]										REACTION TO FIRE [EN 13501-1]	COMBUSTIBILITY OF CORE MATERIAL [EN 13501-1]	WIDTH mm	LENGTH mm																																										
				PANEL THICKNESS (mm)										PANEL THICKNESS (mm)										PANEL THICKNESS (mm)										PANEL THICKNESS (mm)																																																																	
				60	80	100	120	133	150	172	200	240	50	60	80	100	120	133	150	172	200	240	60	80	100	120	133	150	172	200	240	50	60	80	100	120	133	150	172	200	240	50	60	80	100	120	133	150	172	200	240																																																
POWER	T	FTV (façade panel with standard joint)			—	—	EI 120				EI 180						n/a	0,60	0,46	0,37	0,31	0,28	0,25	0,22	0,19	0,16	—										Class A (1200Pa)										n/a	14,4	16,2	18,0	19,8	21,0	22,5	24,5	27,0	30,6	A2-s1, d0 (not valid for PVC and PVCF coating)	Mineral wool non combustible Class A1 to EN 13501-1	up to 14 m																																								
		FTV HL (façade panel with hidden joint)			—	EI 30	EI 60	EI 120				EI 180	EI 240						—										30 [-1;-3]										n/a	14,6	16,4	18,2	20,0	21,2	22,7	24,7	27,2	30,8																																																			
		SNV (roof panel)			—	REI 30	REI 120				n/a	REI 120						n/a	—										Class B (900Pa)										n/a	n/a	15,7	17,5	19,3	21,1	n/a	23,9	25,9	28,4	n/a																																																		
	S	FTV (façade panel with standard joint)			EI 30	EI 60	EI 120				EI 180						0,77	0,66	0,51	0,41	0,35	0,31	0,28	0,25	0,21	0,18	30 [-2;-3]	31 [-2;-3]	32 [-1;-3]				32 [-1;-2]						Class A (1200Pa)										14,6	15,8	18,1	20,4	22,6	24,1	26,1	28,6				31,8	36,3																																						
		FTV HL (façade panel with hidden joint)			EI 30	EI 60	EI 120				EI 180	EI 240						—										32 [-1;-3]										14,8	16,0	18,3	20,5	22,8	24,3	26,3	28,8	32,0	36,5																																																				
PERFORM	R	FTV (façade panel with standard joint)			—	EI 45	EI 120				EI 180						n/a	0,63	0,48	0,39	0,33	0,30	0,26	0,23	0,20	0,17	30 [-2;-3]	31 [-2;-3]	32 [-1;-3]				32 [-1;-2]						Class A (1200Pa)										n/a	15,0	17,0	19,0	21,0	22,3	24,0	26,2	29,0	33,0																																									
		FTV HL (façade panel with hidden joint)			—	EI 60	EI 120				EI 180	EI 240						—										32 [-1;-3]										n/a	15,2	17,2	19,2	21,2	22,5	24,2	26,4	29,2	33,2																																																				
		SNV (roof panel)			—	REI 30	REI 120				n/a	REI 120						n/a	32 [-1;-4]	33 [-1;-4]				n/a	33 [-1;-4]						n/a	Class B (900Pa)										n/a	n/a	16,3	18,3	20,3	22,3	n/a	25,3	27,6	30,3	n/a																																															
	C	FTV (façade panel with standard joint)			EI 30	EI 60	EI 120				EI 180	EI 240						0,75	0,64	0,49	0,40	0,33	0,30	0,27	0,24	0,20	0,17	30 [-2;-3]	31 [-2;-3]	32 [-1;-2]				32 [-1;-3]						Class A (1200Pa)										14,9	16,1	18,5	20,9	23,3	24,9	27,0	29,7	33,0	37,8																																								
		FTV HL (façade panel with hidden joint)			EI 30	EI 60	EI 120				EI 180	EI 240						—										32 [-1;-3]										15,1	16,3	18,7	21,1	23,5	25,1	27,1	29,8	33,2	38,0																																																				
SNV (roof panel)			—	REI 60	REI 120				n/a	REI 180						n/a	32 [-1;-4]	33 [-1;-4]				n/a	33 [-1;-4]						n/a	Class B (900Pa)										n/a	n/a	17,5	19,9	22,3	24,7	n/a	28,3	31,0	34,3	n/a																																																	
SOUND	R	FTV (façade panel with standard joint)			perforated inner side										n/a	0,63	0,48	0,39	0,33	0,30	0,26	0,23	0,20	0,17	30 [-2;-3]	31 [-2;-3]	32 [-1;-3]				32 [-1;-2]						n/a										13,4	14,4	16,4	18,4	20,4	22	23,4	25,6	28,4	32,4																																											
		FTV HL (façade panel with hidden joint)			npd										—										—										—										13,5	14,5	16,5	18,5	20,5	22,1	23,5	25,8	28,5	32,6																																													
		SNV (roof panel)			perforated inner side										n/a	0,64	0,49	0,39	0,33	n/a	0,27	0,23	0,20	n/a	32 [-1;-4]	33 [-1;-4]				n/a	33 [-1;-4]						n/a	—										n/a	15,5	17,6	19,6	21,6	n/a	24,6	26,8	29,6	n/a																																										
										SOUND ABSORPTION (db) EN 14509, aw																																																																																									
										SOUND ABSORPTION (db) EN 14509 8,3, aw																																																																																									

*REQUEST FOR FIRE RESISTANCE MUST BE CLEARLY SPECIFIED BY CUSTOMER. EXACT FIRE RATING WITH REGARDS TO SYSTEM, ORIENTATION AND SPAN CAN BE FOUND UNDER THE CERTIFICATION SUBPAGE ON TRIMO WEB PAGE:
<https://www.trimo-group.com/en/downloads/certificates-and-data-sheets/certificates>

* VALUES VALID ONLY FOR FEATURED APPLICATION
 IN THE CENTRE OF PANEL

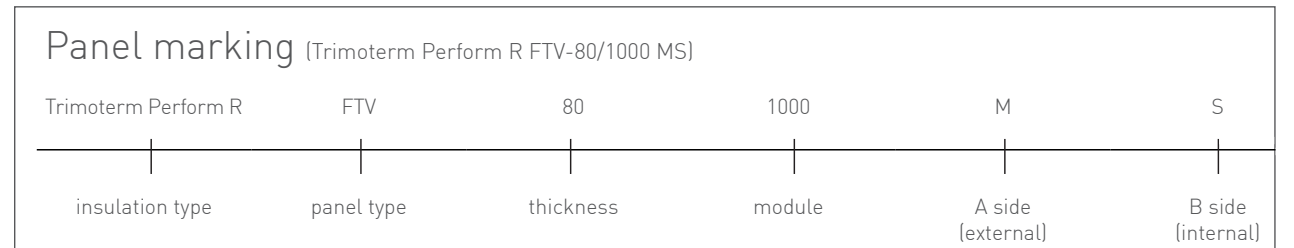
BRAND, PRODUCT FAMILY, PRODUCT TYPE		CERTIFICATES	PROFILE TYPE - EXTERNAL	PROFILE TYPE - INTERNAL			
TRIMOTERM	POWER	T	FTV (façade panel with standard joint)	FTV HL (façade panel with hidden joint)	CE EN 14509 LPCB Cert. No. 650a to LPS 1208 Cert. No. 650b to LPS 1181 Cert. No. 650d to LPS 1181 FM APPROVED SBSC CERTIFIED PRODUCT EN 14509 LPCB Cert. No. 650a to LPS 1208 Cert. No. 650b to LPS 1181 Cert. No. 650d to LPS 1181 FM APPROVED SBSC CERTIFIED PRODUCT EN 14509 LPCB Cert. No. 650a to LPS 1208 Cert. No. 650b to LPS 1181 Cert. No. 650d to LPS 1181 FM APPROVED SBSC CERTIFIED PRODUCT	SMOOTH PROFILE (G)	SMOOTH PROFILE (G)
		S	SNV (roof panel)	FTV HL (façade panel with hidden joint)		MICRO-LINED PROFILE (M)	S - PROFILE (S)
		R	FTV (façade panel with standard joint)	FTV HL (façade panel with hidden joint)		MICRO-LINED PROFILE (M3)	MICRO-LINED PROFILE (M2)
	PERFORM	C	FTV HL (façade panel with hidden joint)	FTV HL (façade panel with hidden joint)		MICRO-LINED PROFILE (M8)	MICRO-LINED PROFILE (M8)
		R	FTV (façade panel with standard joint)	FTV (façade panel with standard joint)		S - PROFILE (S)	V - PROFILE (V)
		S	SNV (roof panel)	SNV (roof panel)		V - PROFILE (V2)	V - PROFILE (V2)
SOUND	R	FTV (façade panel with standard joint)	FTV HL (façade panel with hidden joint)	V - PROFILE (V)	V - PROFILE (V2)		
	R	FTV HL (façade panel with hidden joint)	FTV HL (façade panel with hidden joint)	V - PROFILE (V2)	S - PROFILE (PERFORATED)		
	S	SNV (roof panel)	SNV (roof panel)	TRAPEZOID PROFILE	ONLY FOR TRIMOTERM SOUND R		

G, M, M3, M8, S, V, V2, TRAPEZOID

G, S, M2, M8, V, V2, S (PERFORATED)

Additional options and variations of "V" profiles are available upon request.
 Smooth profile (G) - to ensure an optimal smooth surface for building façades external side of the panel 0,7 mm steel sheet thickness must be used in lieu of standard 0,55 mm.

PANEL MARKING



SPECIFICATION TEXT:
 Trimoterm Perform R FTV-80/1000 MS
 external: 0,55 mm SP 25 µm ANTHRACITE
 internal: 0,50 mm SP 25 µm GREY WHITE

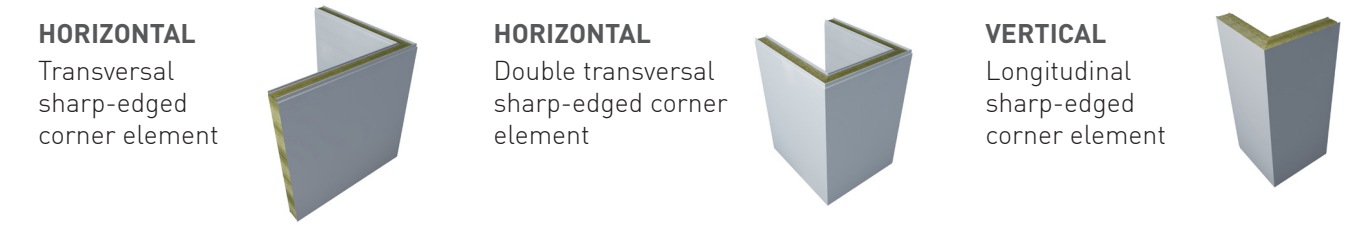
COLOURS

WHITE (R9010)		SILVER (R9006)	
GREY WHITE (R9002)		DARK SILVER (R9007)	
CREAM (R1015)		TRAFFIC RED (R3020)	
LIGHT GREY (R7035)		MOSS GREEN (R6005)	
AGATE GREY (R7038)		GENTIAN BLUE (R5010)	
TELE GREY 2 (R7046)		ANTHRACITE (R7016)	

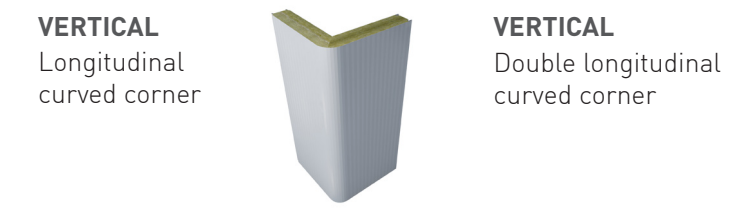
Colours may slightly deviate due to different monitors and prints compared to original colours.
 Trimo can send you a metal swatch upon request.

CORNER ELEMENTS

SHARP-EDGED CORNER ELEMENTS



ROUNDED CORNER ELEMENTS



SEGMENTED PANELS



COMPANY PROFILE

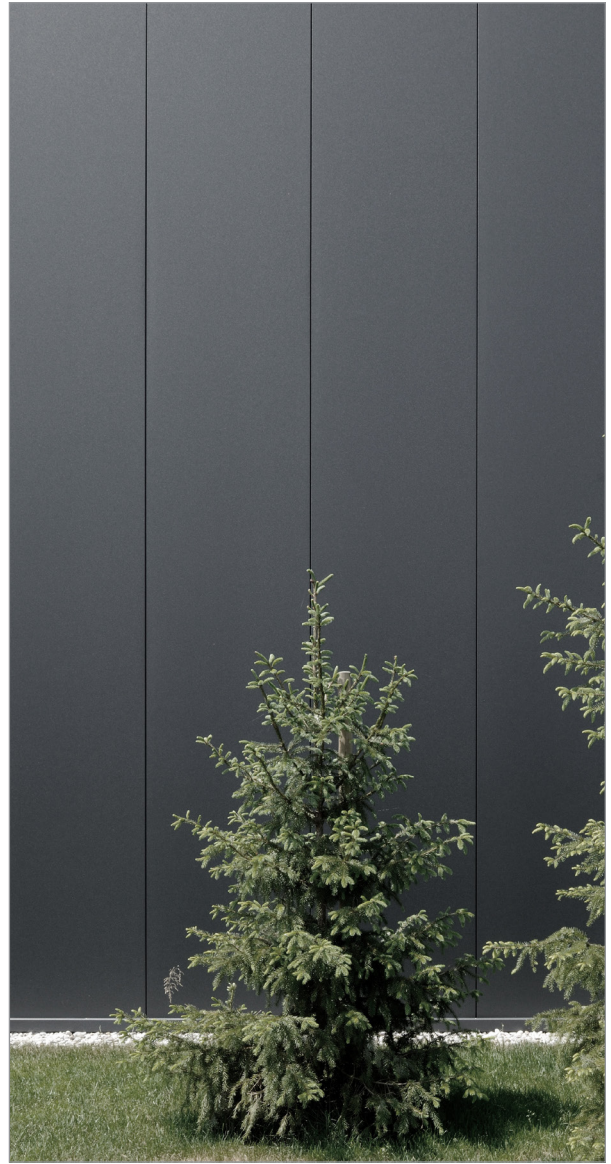
Trimo is a one of the leading European companies developing original and complete **building envelope solutions** in the areas of fire-proof **façades** and **roofs**. Located in Trebnje, Slovenia, Trimo sells products and services under its own brand across more than 100 countries worldwide and has a sales network in almost 30 countries. We are a **reliable, trustworthy** global supplier of **innovative**, flexible, energy-efficient and environmentally friendly architectural building solutions.

Our customers are at the heart of our operations as we deeply understand their needs and provide them with the highest level of service and product quality. The list of outstanding and reputable **partners** such as Airbus, London Heathrow, Nestle, Philips, DHL, Porsche, IKEA, Prologis, Mercedes Benz, Coca Cola and many others is a true reflection of our **passion, responsibility** and commitment to our work.



Mitglied des:

IFBS Industrieverband
für Bausysteme
im Metalleichtbau



TRIMO

TRIMO D.O.O.

PRIJATELJEVA CESTA 12,
8210 TREBNJE, SLOVENIA

T: +386 (0)7 34 60 200

F: +386 (0)7 34 60 127

TRIMO@TRIMO-GROUP.COM

WWW.TRIMO-GROUP.COM

Trimo Group holds full copyrights on the information and details provided on this media, therefore any unauthorized reproduction and distribution is strictly prohibited. Professional care has been taken to ensure that information/details are accurate, correct and completed and not misleading, however Trimo, including its subsidiaries, does not accept responsibility or liability for errors or information, which is found to be misleading. Information/details on this media are for general purposes only. Use of it is on your own initiative and responsibility for compliance with local laws. Any deviations in details and project solutions are user responsibility. In no event, will we be liable for any loss or damage including without limitation, indirect or consequential loss or damage, or any loss or damage whatsoever arising from loss profits arising out of or in connection with, the use of this media. All information issued by Trimo Group is subject to continuous development and information/details contained on this media are current at date of issue. It is user's responsibility to obtain most up-to-date information from Trimo when information/details are used for project.

The last version of the document is available on www.trimo-group.com. Latest version of published document in English language prevails over other translated language documents. For information about the delivery of panels see Trimo's General conditions of sale and purchase (<https://trimo-group.com/en/trimo/general-conditions-of-sale>).